

[Home](#)[About Us](#)[What We Do](#)[News & Events](#)[Career](#)[Contact Us](#)

# Welcome To Milambo Co-operative Union Ltd

[Discover More](#)

## Our Key Programmes Areas:



### Marketing

We act as a link between our members and the buyers.



### Distribution Of Agricultural Inputs

We facilitate the distribution of agricultural inputs to our members such as fertilizers, rapping materials, agro-chemicals and farm implements.



### Investments

We explore different business opportunities and invest on behalf of our members increase our income.



### Extension Services

We have programs designed to provide farmers with information, advice, and support to improve their agricultural practises, increase productivity and enhance sustainability.

## Who We Are

Milambo Co-perative Union Limited formed in 2018 as a slip up entity of WETCU is a farmersCo-operative incorporated under the Co-operative Societies Act, 2013 established for the purpose of promoting economic interests of members such as Cash Crop Farming, Marketing, Agricultural Inputs Supplies and all matters related to the welfare of its members.

[About Us](#)



### Our Mission

Our mission is to provide the best service to our members who are primary societies in increasing the value of the products produced and strengthening their economic development activities.

[Read more](#)

### Our Vision

Our vision is to be strong and vibrant cooperative that exceeds the expectation of its own members by offering convenient, superior and quality service resourced by an innovative , motivated team and superior financial management.

[Read more](#)



## Our Current Investments



#### Buildings And Properties

Milambo Cooperative Union Ltd owns Land and buildings at Urambo DC.



#### Market Shares

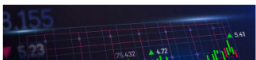
Milambo Cooperative Union Ltd owns shares at CRDB Bank PLC and KCBL Bank.



#### Current Assets

Milambo Cooperative Union Ltd has invested in both current and non-current assets.

## Investments On Our Radar





## Buying Shares At Different Companies

Invest in market shares to increase our portfolio.



## Buying And Selling Agricultural Products

Investment on radar



## Buying Or Building Rental Properties

Investment on radar

# Latest News and Updates



+255-022-4444465



contact@milambocu.com



Urambo/Tabora



26 Bomani Road

### Company

[About Us](#)

[Contact Us](#)

[Board & Management](#)

[News and Events](#)

[Career](#)

### Our Services

[Marketing](#)

[Extension Services](#)

[Distribution of Agricultural Inputs](#)

[Investments](#)

### Quick Links

[Wizara ya Kilimo](#)

[Tume ya Maendeleo ya](#)

[Ushirika\(TCDC\)](#)

[Tanzania Federation of Co-operative Ltd\(TFC\)](#)

[Cooperative Supervision Management Information System \(CSMIS/MUVU\)](#)

[Co-operative Audit and Supervision Corporation \(COASCO\)](#)

